

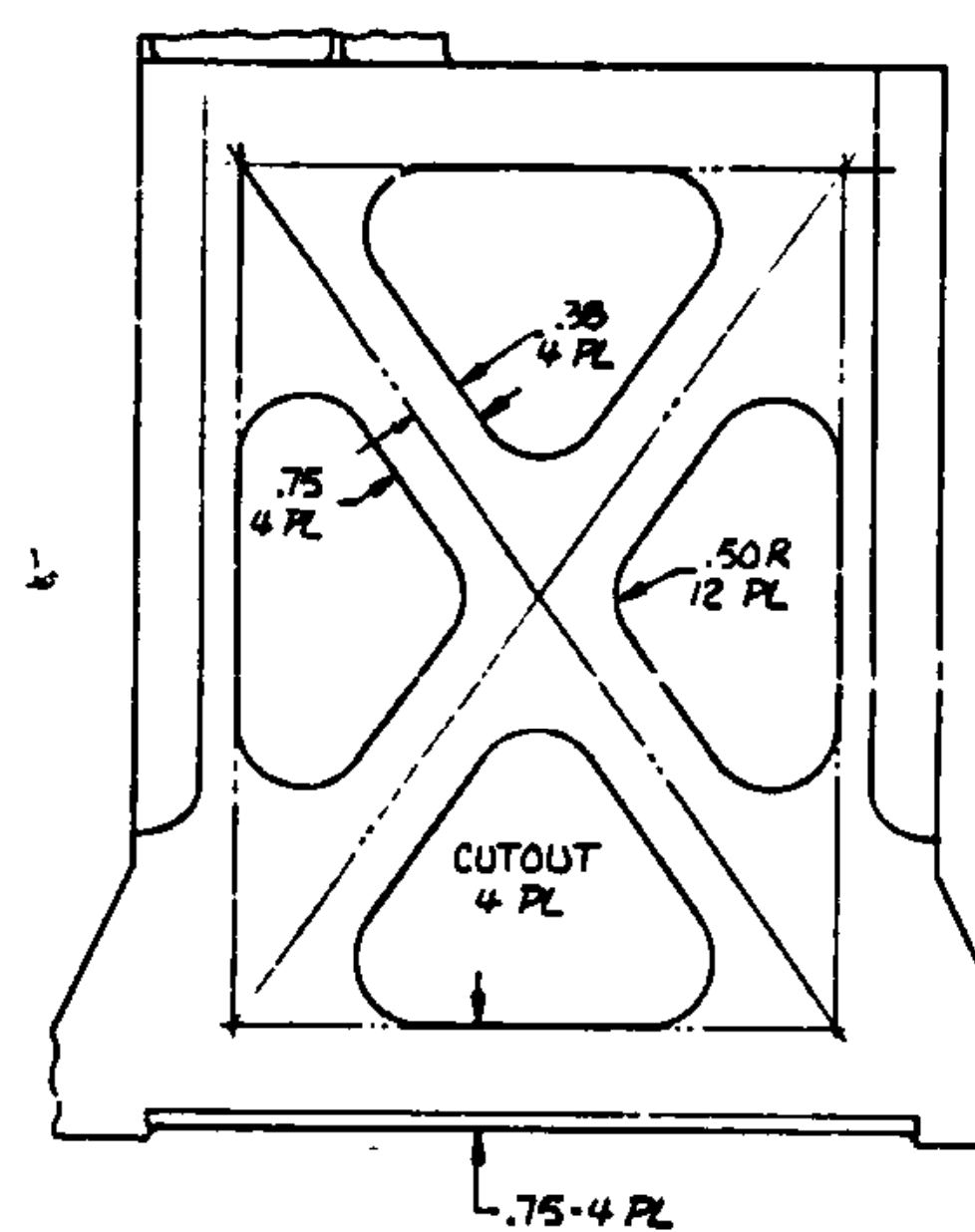
SEE PL 4175768 FOR PARTS LIST & NOTES

QTY	CODE	PART OR IDENTIFYING NO.	NOMENCLATURE OR DESCRIPTION	MATERIAL DESCRIPTION OR NOTE	MATERIAL SPECIFICATIONS	ZONE	ITEM NO.
1	001	4175768	TUNER, UMBILICAL - FSS	LOCKHEED MISSILES & SPACE COMPANY, INC. SUNNYVALE, CALIFORNIA			
1	001	4175768	TUNER, UMBILICAL - FSS	LOCKHEED MISSILES & SPACE COMPANY, INC. SUNNYVALE, CALIFORNIA			
1	001	4175768	TUNER, UMBILICAL - FSS	LOCKHEED MISSILES & SPACE COMPANY, INC. SUNNYVALE, CALIFORNIA			
1	001	4175768	TUNER, UMBILICAL - FSS	LOCKHEED MISSILES & SPACE COMPANY, INC. SUNNYVALE, CALIFORNIA			
1	001	4175768	TUNER, UMBILICAL - FSS	LOCKHEED MISSILES & SPACE COMPANY, INC. SUNNYVALE, CALIFORNIA			
1	001	4175768	TUNER, UMBILICAL - FSS	LOCKHEED MISSILES & SPACE COMPANY, INC. SUNNYVALE, CALIFORNIA			
1	001	4175768	TUNER, UMBILICAL - FSS	LOCKHEED MISSILES & SPACE COMPANY, INC. SUNNYVALE, CALIFORNIA			
1	001	4175768	TUNER, UMBILICAL - FSS	LOCKHEED MISSILES & SPACE COMPANY, INC. SUNNYVALE, CALIFORNIA			
1	001	4175768	TUNER, UMBILICAL - FSS	LOCKHEED MISSILES & SPACE COMPANY, INC. SUNNYVALE, CALIFORNIA			

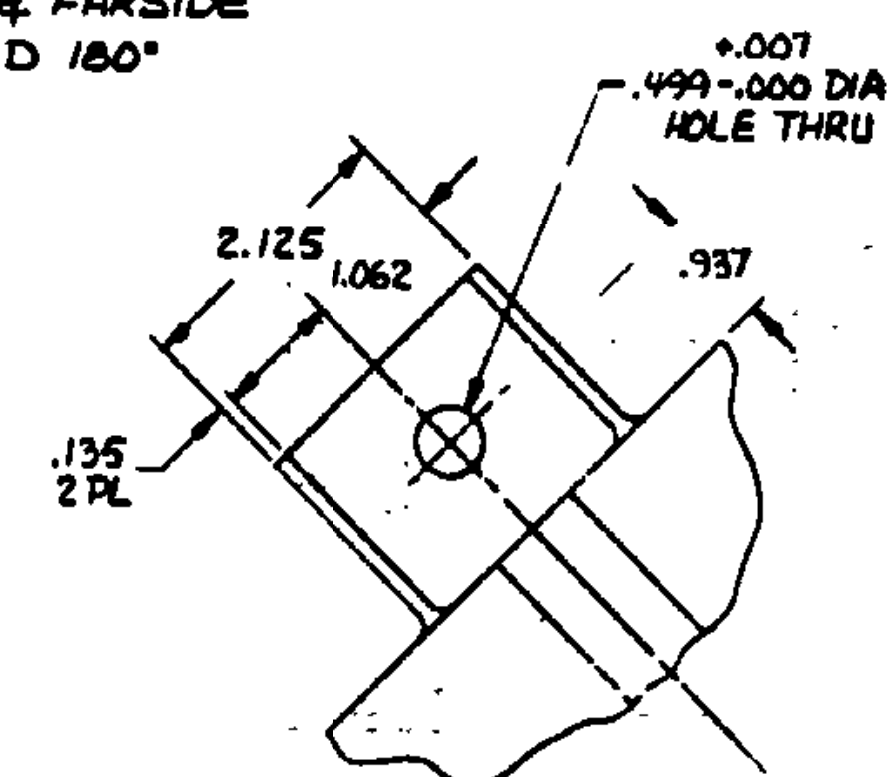
EJRT FLMVCOIE08111 02-32


051

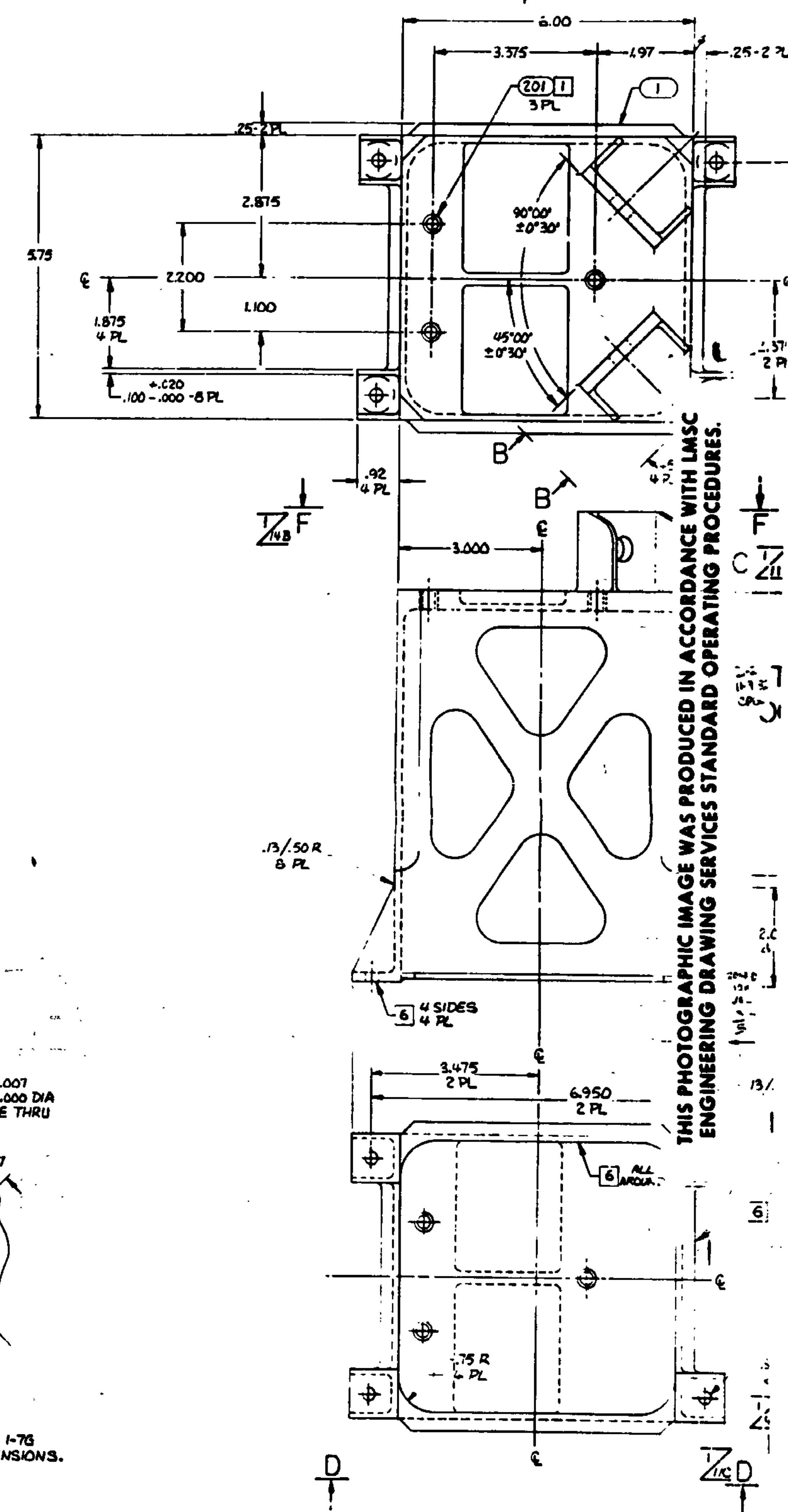
THIS PHOTOGRAPHIC IMAGE WAS PRODUCED IN ACCORDANCE WITH LMSC ENGINEERING DRAWING SERVICES STANDARD OPERATING PROCEDURES.



VIEW D-D Σ_{BA}
NEAR SIDE & FAR SIDE
ROTATED 180°



VIEW C-C 
TYP-2 PL
SEE VIEW B-B ZONE 1-7G
FOR ADDITIONAL DIMENSIONS.



THIS PHOTOGRAPHIC IMAGE WAS PRODUCED IN ACCORDANCE WITH LMSC
ENGINEERING DRAWING SERVICES STANDARD OPERATING PROCEDURES.